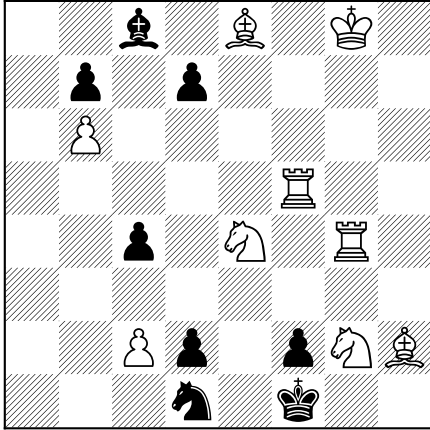


## Chapter 1

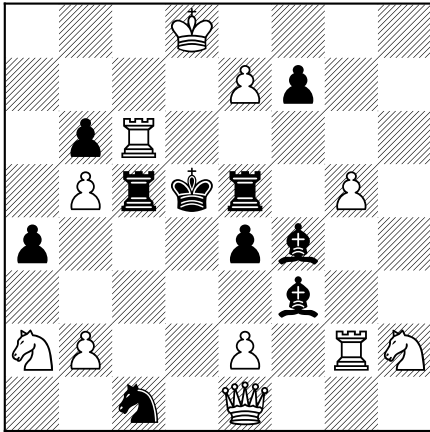
## The British Chess Magazine, 1881

No.1 W. Grimshaw



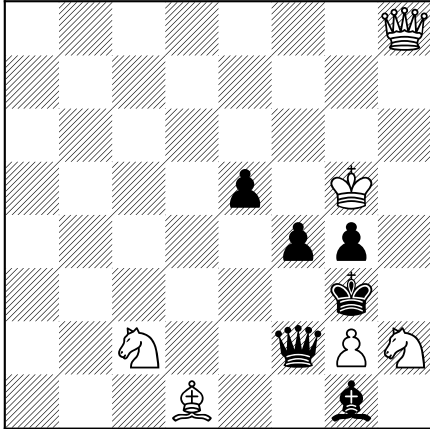
#3 B.C.M. 1881-01

No.4 W. Coates



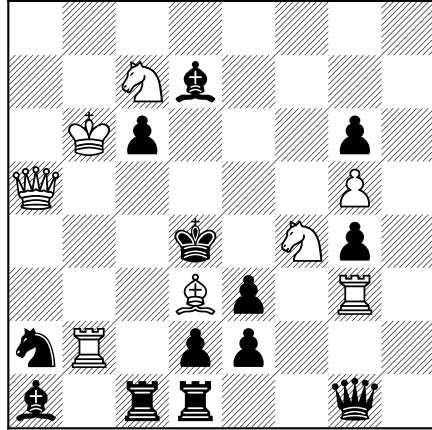
#4 B.C.M. 1881-01

No.7 C.W. of Sunbury



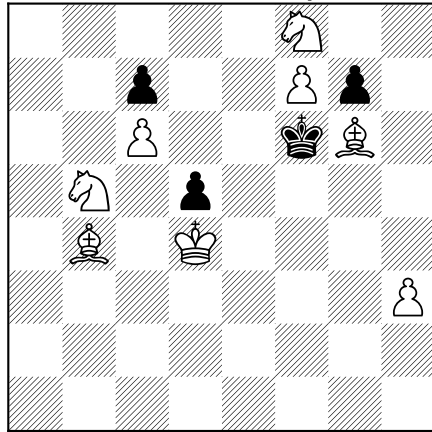
#4 B.C.M. 1881-01

No.2 C. Callander



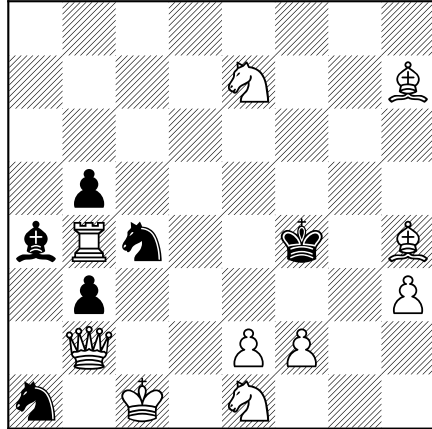
#4 B.C.M. 1881-01

No.5 A. Cyril Pearson



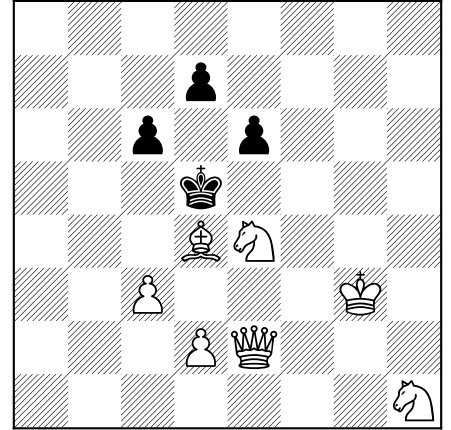
#3 B.C.M. 1881-01

No.8 H. E. Kidson



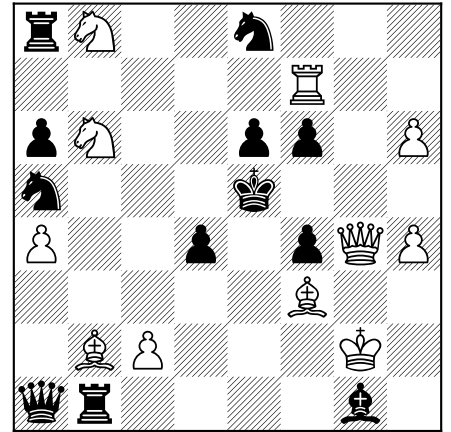
S#5 B.C.M. 1881-01

No.3 J. Pierce



#3 B.C.M. 1881-01

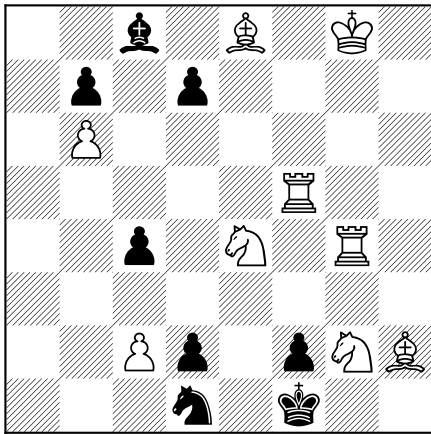
No.6 J. W. Abbott



#4 B.C.M. 1881-01

## 1.1 B. C. M., 1881-01(1881-03)

## 1.1.1 No.1 W. Grimshaw



#3

1 B to R5, P to B6(a), 2 B to K8, Any move, 3 Mates accordingly.  
(a) 1 QP moves, 2 Kt takes P ch, &c.

1 ♖h5 c3 2 ♙e8 ~ 3 #  
1 ... d5 2 ♜xd2 ♚e2 3 ♞d4 #

H. Blanchard Difficult. The waiting move of the ♙ and his return to the original position are very pretty. Construction very good.

B. G. Laws Difficult and clever. Other solutions ingeniously avoided.

R. K. L. Pretty, but the retreat of ♙ is the only difficulty.

W. Jay Interesting and pretty. Worthy of its talented author.

J. P. Lea Little variety and less difficulty.

R. W. Johnson First move easy; subsequent block neat but incurs waste of power.

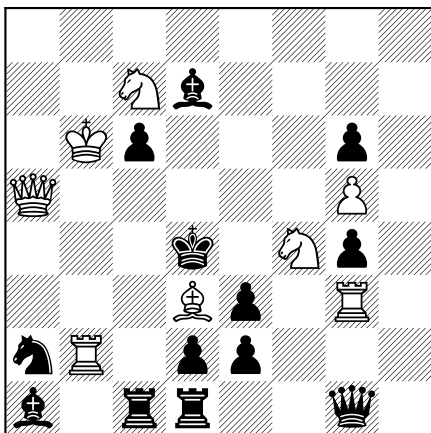
Gamma Solution neat, machinery somewhat cumbersome.

Mercutio A bright spark from the anvil of a veteran craftsman.

P. Le Page, Jun., Guernsey The second move in mainplay is rather dark, other solutions well prevented.

East Marden and J. Bryning are wrong. Neither 1 ♜h4 nor 1. ♙f7 will answer.

## 1.1.2 No.2 C. Callander



#4

1 Q to R3, P to B4 (a, b, c, d), 2 Q to R7, K to K4,\* 3 Q to Kt8, Any move, 4 Mates accordingly.

\* 2 K to B6, or B takes R, or Kt to B6, 3 Kt to Kt5 ch or QKt to K6 ch accordingly, 4 Q mates accordingly.

(a) 1 K to K4, 2 Q to KB8, B to B4, 3 Kt takes KP, &c.

(b) 1 B takes R, R to B5, or Q to R8, 2 Kt takes P ch, K to K4, 3 Q to K7 ch, &c.

(c) 1 Q to Kt7, 2 Q to K7, Q to Q4 or K5! 3 QKt takes Q, or Q takes Q ch, &c.

(d) 1 Kt to Kt5, 2 R takes Kt ch, K to K4, or R to B5, 3 Kt takes P ch, or R takes R, &c.

1 ♖a3	c5	2 ♖a7	♙e5	3 ♖b8	~	4 #
2 ...		2 ...	♙c3	3 ♜b5+	~	4 ♖#
2 ...		2 ...	♙xb2	3 ♜b5+	~	4 ♖#
2 ...		2 ...	♜c3	3 ♜ce6+	~	4 ♖#
1 ...	♙e5	2 ♖f8	♙f5	3 ♜xe2+	etc	
1 ...	♙xb2	2 ♜e2+	♙e5	3 ♖e7+	etc	
1 ...	♞c4	2 ♜e2+	♙e5	3 ♖e7+	etc	
1 ...	♖h1	2 ♜e2+	♙e5	3 ♖e7+	etc	
1 ...	♖g2	2 ♖e7	♖d5	3 ♜cd5	etc	
2 ...		2 ...	♖e4	3 ♖xe4	etc	
1 ...	♜b4	2 ♞xb4+	♙e5	3 ♜xg6+	etc	
2 ...		2 ...	♞c4	3 ♞xc4	etc	

J. P. Lea A superb specimen of Chess strategy, richly repaying difficulty of solution by numerous beautiful variations..

B. G. Laws Extremely difficult, subtle and ingenious. By far the best in this number.

H. Blalchard Exceedingly interesting and difficult to solve. Very well constructed.

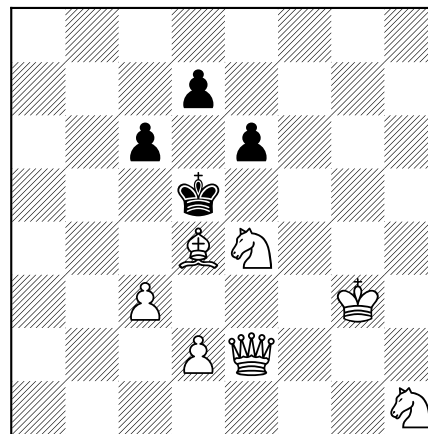
Gamma Good and very difficult. It is noteworthy that in mainplay no check is given until the final blow.

Mercutio Highly finished and lard as tempered steel.

J. Bryning and W. Jay cannot solve this problem by 1 ♞b3. The answer is 1 ♞c3.

W. Johnson proposes 2 ♙c2 in mainplay (foiled by 2 ♜b4), and R. K. L. has omitted mainplay and variations a and e from his solution.

## 1.1.3 No.3 J. Pierce



#3

1 B to K5, K takes B (a), 2 Q to KR5 ch, K takes Kt, 3 Kt mates.  
(a) 1 P to QB4 or Q3, 2 Kt to KB6 ch, &c.

1 ♙e5	♙xe5	2 ♖h5+	♙xe4	3 ♜f2 #
1 ...	c5	2 ♜f6+	♙c6	3 ♖a6 #
1 ...	d6	2 ♜f6+	♙c5	3 ♙d4 #

W. Jay Fairly good but not difficult.

J. Bryning A capital problem.

J. P. Lea Easy, but mates pure and pleasing.

H. Blanchard First move well hidden. The play and sacrifice of Bishop cause a pleasing surprise. Construction excellent.

P. Le Page, Jun Very neat and free from duals. Not easy, though check is given on move 2 in every variation.

B. G. Laws Elegant, difficult, and interesting.

Mercutio After the hair tearing perplexities of No. 2, this forms an agreeable contrast, and is refreshingly pleasant to solve,

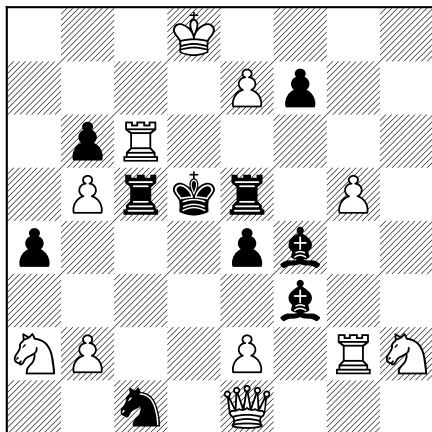
being by no means devoid of beauty in its unpretentious style.

East Marden Neat, but the ♖on h1 gives the clue.

R. W. Johnson Good and difficult of its kind.

Gamma Not easy although the outlying cavalier shouts loudly "I shall be wanted !"

1.1.4 No.4 W. Coates



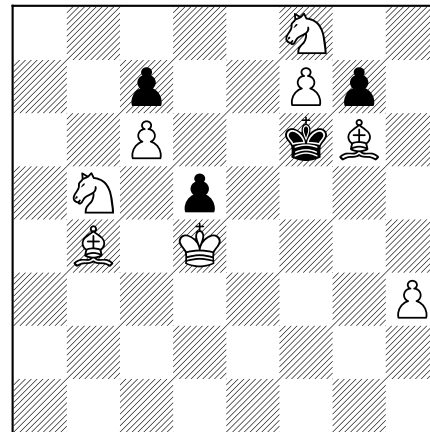
#4  
 1 Q to B3 (a, b), Kt takes Kt, 2 R to Q6 ch, K takes R, 3 Q to Q4 ch, &c.  
 (a) 1 R takes Q, 2 Kt to Kt4 ch, K to Q5, 3 P takes R ch, 4 Kt to KB sq mate.  
 (b) 1 P to K6, 2 Kt ch, K to K5, 3 P takes B ch, 4 R mates.  
 This problem needs the addition of a Black Pawn at a4.

1 ♖c3 ♜xa2 2 ♜d6+ ♝xd6 3 ♖d4+ ~ 4 ♖#  
 1 ... ♜xc3 2 ♜b4+ ♝d4 3 bxc3 ♝e3 4 ♜f1#  
 1 ... e3 2 ♜b4+ ♝e4 3 exf3 ♝f3#

W. Jay A good composition and very pleasing though abounding in checks.  
 Gamma Variations many, difficulties none.  
 R. K. L. Remarkably pretty though not very difficult.  
 J. P. Lea The first move seems to stare at one.  
 Mercutio Attractively variegated but unsound in what I conceive to be the mainplay.\*  
 P. Le Page, Jun Free from duals, and combines difficulty with beauty of conception.  
 H. Blanchard 1st move being restrictive is father suggestive; after-play very pretty and oonstruction good.  
 J. Bryning Excellent and well constructed.  
 B. G. Laws Pretty; too much checking to be very difficult.

\* This problem needs the addition of a Black Pawn at a4 to prevent this dual on 2nd move of mainplay, 2 ♖b3+ ♝d4 3. ♜xf3+ &c. Mercutio sends both methods of play, R. W. Johnson neither, while all others named above have given one way only.

1.1.5 No.5 A. Cyril Pearson

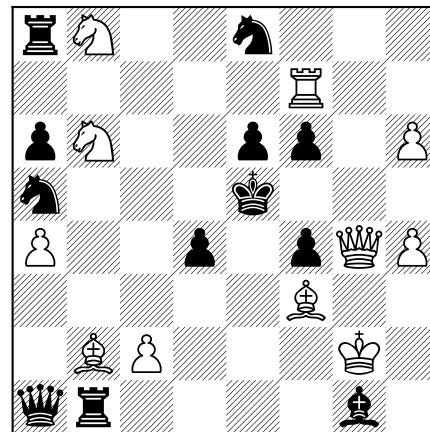


#3  
 1 B to K sq, K to K2 (a), 2 Kt to QR7, K moves, 3 B mates accordingly.  
 (a) 1 K to Kt4, 2 B to Kt3, &c.

1 ♙e1 ♜e7 2 ♞a7 ♚ 3 ♙#  
 1 ... ♜g5 2 ♙g3 etc

R. W. J An easy.problem of the puzzle type.  
 R. G. L The worst of the eight.  
 W. Jay. Mercutio Neat and pretty.  
 Gamma Very easy. It is well beginners should be thought of.  
 J. P. Lea But faintly problematical.  
 H. B. Pretty, pleasing, easy.  
 J. B., P. Le P., Junr., R. K. L., East Marden.

1.1.6 No.6 J. W. Abbott



#4  
 1 R takes P, Kt takes R (a, b), 2 Kt to B8, Kt takes Q, 3 Kt to Q7 ch, K moves, 4 Kt mates.  
 (a) 1 K takes R, 2 Q to Kt5 ch, 3 B to R5 ch, &c.  
 (b) 1 K to Q3, 2 Q takes BP ch, &c.\*  
 \* White can also play 2 Q takes KP ch, &c.

1 ♜xf6 ♜xf6 2 ♜c8 ♜xg4 3 ♜d7+ ♚ 4 #  
 1 ... ♝xf6 2 ♖g5+ ♝f7 3 ♙h5 etc  
 1 ... ♝d6 2 ♖xf4+ etc  
 1 ... ... 2 ♖xe6+ etc

B. G. L Very difficult, finish in mainplay very neat.  
 H. B. Very difficult and construction also good, but I prefer No. 2.  
 Gamma Good, the mainplay is very fine.  
 J. P. L Difficult, but marred by dual play if Black moves 1 ... ♝d6.

J. B. Not quite so good as No. 4.

W. J. Very good indeed. Mainplay extremely nice. Black ♖ ingeniously placed to prevent a cook.

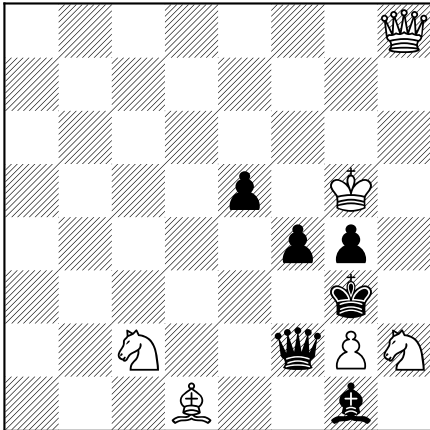
R. W. J. The best problem in the number.

P. Le P., Jun Very good, especially action of the Kts in mainplay which is well disguised.

Mercutio Second only to No. 2, although—unlike that problem—its merits are confined to the mainplay which dwarfs the sub-variations.

R. K. L. is wrong on 2nd move of mainplay. J. P. Lea and H. Gearing, Guernsey, give both methods of play in variation b (see solution.) Other solvers send one way only.

### 1.1.7 No.7 C.W. of Sunbury



#4

1 Kt to K sq, Q takes Kt! 2 Kt takes P, K takes P! 3 Q to KR sq ch, Any move, 4 mates accordingly.

1 ♖e1 ♕xe1! 2 ♜xg4 ♝xg2 3 ♖h1+ ~ 4 #

B. G. L. Brilliant, well constructed and very interesting.

H. B. Very cleverly constructed, not easily seen through, mates neat, and play interesting.

R. W. J. Very pretty but not difficult, Black's moves being forced.

W. J. A charming little problem.

P. Le P., Jun Very pretty.

East Marden One of the best four-movers I have seen. It puzzled me some time, though the 1st move is not difficult.

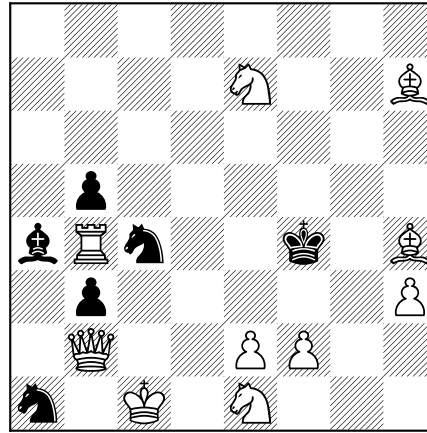
J. P. L. A bright problem, admirably constructed.

J. R. Mercutio Good.

Gamma A comfortable problem. It invites examination and the result, after trial, is highly pleasing.

R. K. L. is wrong in 2nd move of mainplay.

### 1.1.8 No.8 H. E. Kidson



S#5

1 B to QKt sq, Kt to QB7, 2 Q to B6 ch, K moves, 3 K to Q sq, P moves, 4 Q to K 6 ch, K to Q 5 or B5, 5 Q to K3 ch, Kt takes Q dis mate.

1 ♗g1 ♜c2 2 ♕f6+ ♝e4 3 ♞d1 b2  
4 ♖e6+ ♞d4 5 ♕e3+ ♜xe3 #

J. P. L. A relief from the string of checks associated with most suimates.

R. W. J. Remarkably pretty and of considerable difficulty.

P. Le P., Jun. The play is very pretty and well conceived.

W. J. Skilfully constructed and pleasing to solve.

B. G. L. Mercutio A charming stratagem.

H. B. Not very difficult. The pinning and after release of the Kt are very neat. Is the ♗at h4 an example of economy of force? \*

\* J. Bryning, R. K. L., and East Marden are wrong on White's 4th move. They propose 4. ♖g5, but then if 4 ... ♗moves, 5 ♖e3, Black would be *mated* because his ♜is not unpinned! This answers H. B's question.

R. W., Canterbury, has solved Nos. 1 to 8, and H. G., Guernsey, all but No. 2, without reviewing them.