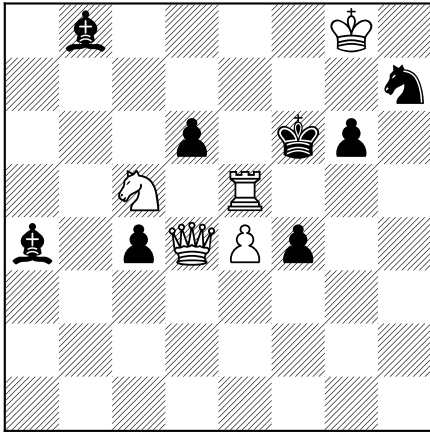
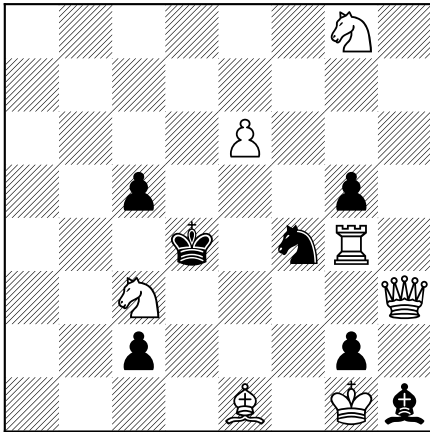


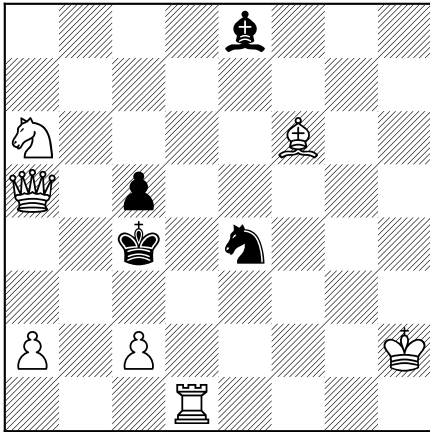
No.9 S. Gold



#2 B.C.M. 1881-02
No.12 J. G. Nix

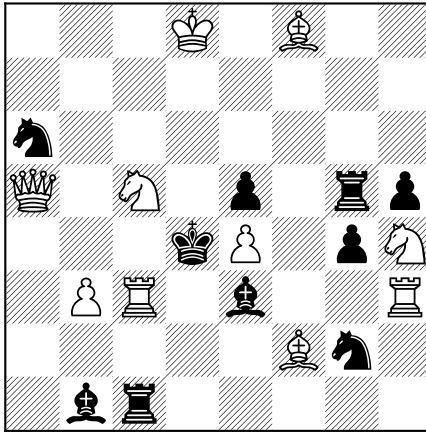


#3 B.C.M. 1881-02
No.15 WM. Greenwood

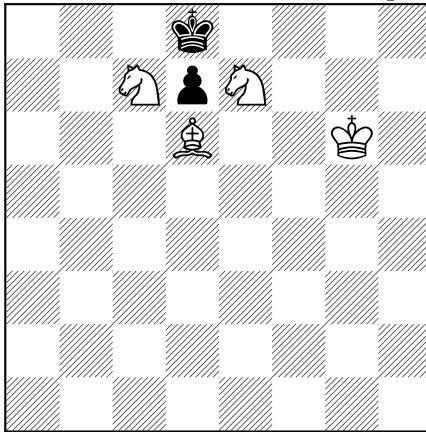


#3 B.C.M. 1881-02

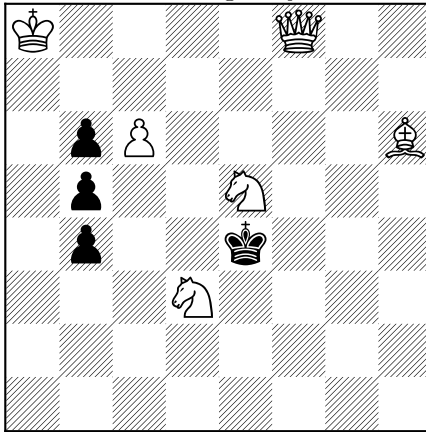
No.10 M. Lamouroux



#2 B.C.M. 1881-02
No.13 E. Pradignat

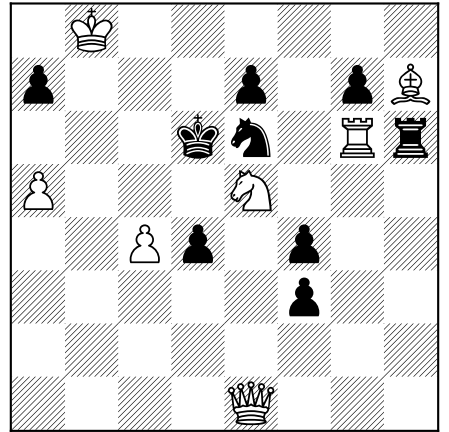


#4 B.C.M. 1881-02
No.16 Sgt-Major McArthur

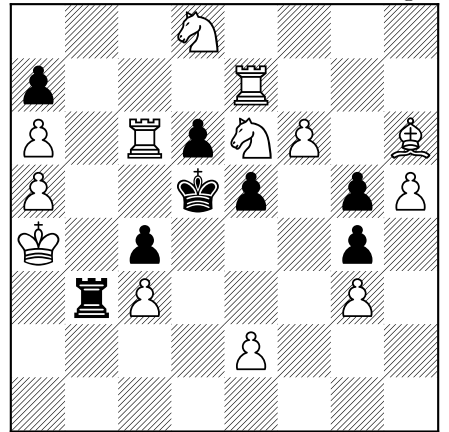


#3 B.C.M. 1881-02

No.11 N. Sardotsch



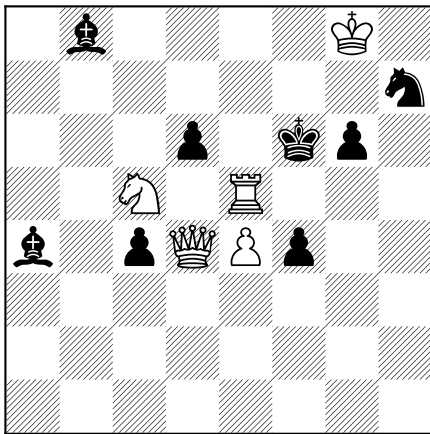
#3 B.C.M. 1881-02
No.14 J. C. J. Wainwright



#4 B.C.M. 1881-02

1.2 B. C. M., 1881-02(1881-04)

1.2.1 No.9 S. Gold



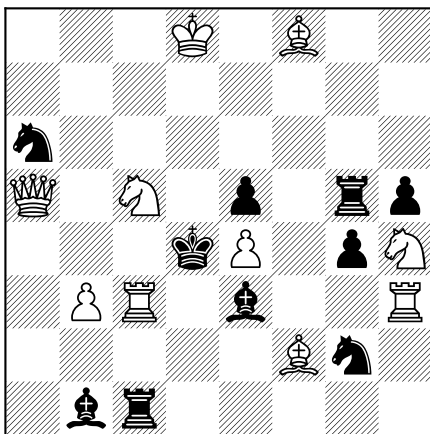
#2

1 Q to Q2, &c.

1 ♖d2 ~ 2 ♖xf4 #
 1 ... ♗xe5 2 ♖c3 #
 1 ... g5 2 ♜e6 #
 1 ... dxe5 2 ♖d8 #

- H. Blanohard Not difficult but pleasing and well constructed. .
 J. Bryning Neat.
 H. W. Butler Rather simple but contains some very neat mates.
 Gamma You might as well tickle the dome of St. Paul's to please the Dean and Chapter !
 W. Jay An average 2-er.
 R. W. Johnson Very simple.
 B. G. Laws Nicely constructed, idea rather worn.
 J. P. Lea Fair.
 C. H. C. Richardson Good and well worthy of the author.
 Winter Very pretty.
 J. Keeble Neat but not difficult.

1.2.2 No.10 M. Lamouroux



#2

1 K to B8, &c.

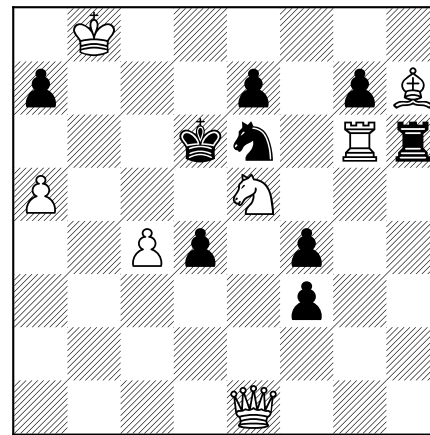
1 ♔c8 ♜xc3 2 ♖d8 #
 1 ... ♙xf2 2 ♖d8 #
 1 ... ♘xc5 2 ♖b4 #
 1 ... ♘xh4 2 ♙xe3 #
 1 ... ♜c2 2 ♜d3 #
 1 ... gxf3 2 ♘f3 #

- H. B. Rather deceptive, and exhibits great care and skill in its

composition.

- H. W. B. Contains good Chess.
 Gamma One of the common herd.
 H. Gearing A regular dead block.
 W. J. A good "blook" problem.
 R. W. J., R. W., Canterbury. Better than No. 9.
 J. P. L. Excellent of its kind.
 B. G. L. Ingenious, free from duals.
 C. H. C. R. A fair specimen of the waiting class.
 Winter Very easy; construction very good.
 J. K. A very fine problem, and took me some time to solve. I did not suspect that the ♗ should move.
 J. Bryning is wrong. 1 ♜xe3 will not answer.

1.2.3 No.11 N. Sardotsch



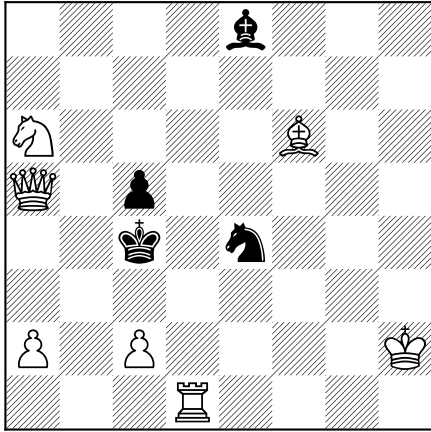
#3

1 Q to QKt sq, K takes Kt, 2 Q to K4 ch, K takes Q or K to Q3, 3 R takes Kt or Q to Q5, mate accordingly. With several variations.

1 ♖b1 ♗xe5 2 ♖e4+ ♗xe4 3 ♜xe6 #
 1 2 ... ♗d6 3 ♖d5 #
 1 ... a6 2 ♖b6+ ♗e5 3 ♖xe6 #
 1 ... ~ 2 ♘f7+ ♗d7 3 ♖b5 #

- H. B. Good and interesting, though not very difficult nor free from duals.
 J. B. Beautiful.
 H. W. B. Not easy, mainplay very neat.
 Gamma The discovered mate is neat enough, but evidently ♖ must move first.
 H. G. Interesting but unfortunate in duals.
 W. J. Very fair, but the initial move and subsequent sacrifice of the ♖ are at once suggested.
 R. W. J. First move easy, fair in variety. A dual if RP moves.
 B. G. L. Some pretty variations but spoiled by duals.
 J. P. L. Mating position in mainplay pure and pleasing.
 C. H. C. R. Very pretty.
 Winter Mainplay very pretty; rather difficult.
 P. Le Page, Jun Not easy, but spoiled by duals. Sacrifice of ♖ and after-play rather pretty.

1.2.7 No.15 WM. Greenwood



#3

1 Q to QKt6, B to QR5, 2 R to QB sq, K to Q4 or anything, 3 Mates accordingly.

1 ♖b6 ♙a4 2 ♜c1 ♘d5 3 c4 #
 1 2 ... ♙xc2 3 ♖b3 #
 1 2 ... ♗xf6 3 ♖xc5 #

H. B. Well constructed, ingenious, subtle and very difficult.

H. W. B. A fine problem. Key-move suggestive, but second move very subtle.

Gamma Capital ! It's great merit consists in the number of promising but false attacks. Difficult.

W. J. A good two-mover with a move added.

R. W. J. A capital problem with many near escapes and very dark 2nd move. It gave me more trouble than all the rest.

B. G. L. The 2nd move is very pretty and ingenious.

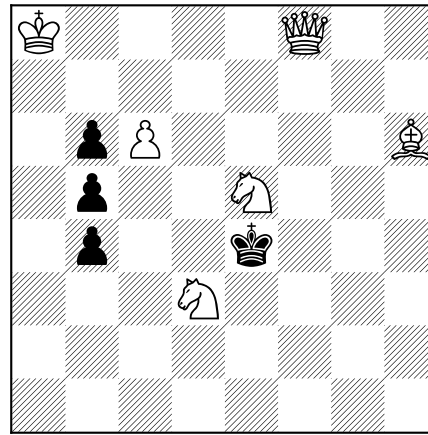
C. H. C. R. Difficult, with good mates.

Winter The entire difficulty lies in the 2nd move.

J. Bryning proposes 1 a4, &c., and J. P. Lea 1 ♜d6, &c., but

neither method will solve this problem.

1.2.8 No.16 Sgt-Major McArthur



#3

1 B to K3, K takes B (a), 2 Q takes P, K to K7, 3 Q mates.
 (a) 1 K to Q4, 2 Q to B7 ch, &c.

1 ♙e3 ♗xe3 2 ♖xb4 ♘e2 3 ♖e1 #
 1 ... ♗d5 2 ♖f7+ ♘e4 3 ♖f3 #

H. B. Neat, pleasing, and easy.

J. B. Very good indeed!

H. W. B., C. H. C. R. Very neat.

Gamma Difficulty, good looks, and simplicity in construction are not often found combined, but here we have all three.

W. J. Mediocre.

R. W. J. Neatly constructed but not very difficult.

B. G. L. Not easy, but not up to the author's best standard.

P. Le P. Easy and without scope.

J. P. L. Lacks variety, otherwise very good.

Winter. An open position giving scope for some good tries. -

R. W., Canterbury, has solved the 8 foregoing problems.